

# Trex<sup>®</sup> deckscapes<sup>®</sup>



brand new views!

- bringing kitchens outdoors
- soothing garden designs
- design trade secrets





# contents

## 1 Deck Dreams

Trex® decks go beyond your imagination and into your backyard.

## 2 Total Deck Living

There's no place like home—unless it's out on your deck.

## 8 Alfresco Kitchens

The hottest trend in home design whisks you outside for casual outdoor cooking.

## 12 At Water's Edge

Poolside pampering gets better and better. Trex decks are so comfortable, you might want to lounge all day.

## 14 Panoramic Pleasures

Whether it's a treetop terrace or an oceanside veranda, make the most of your view.

## 16 Flower Power

Trex decks leave you more time to tiptoe through the tulips and down the garden path.

## 21 Inside Out

From your dining room to your yard, Trex decks expand your living space.

## 24 Gazebo Retreats

These nostalgic backyard hideaways offer modern delights you can't resist.

## 26 Pattern Play

Zigzags, sunbursts or curves . . . play up your style with an outdoor space that's all decked out.

## 28 Stylin'

Victorian, Colonial, contemporary—or not. Whatever your house style, there's a Trex deck to match.



## Trex® Specs

When you're ready to build your dream deck, Trex decking is ready to go. In this section:

**30** Why Trex decking is best—How to contact a TrexPro®—Lumber profiles—And a great guarantee.

**32** Trex Color Palette—Mix and match Trex shades—See how to add some curves to your deck.

**33** Trex Planning Guide—Use this handy form to plan your dream deck.

©2006 Trex Company, Inc. All rights reserved. TREX®, the TREX logo, The DECK of a Lifetime®, Create Your Space®, Deckscapes®, Trex Wood Polymer®, Trex Accents®, Trex Origins™, Trex Brasilia®, TrexPro®, Trex Railpost™, Trex Designer Series Railing™, Trex Artisan Series Railing™, Trex Seclusions™ and TrexExpress™ are either federally registered trademarks, trademarks or trade dress of Trex Company, Inc., Winchester, Virginia.

# deckdreams

## Turn your daydreams into a Deck of a Lifetime®.

The setting sun casts a warm glow across your deck from the pool to the gazebo. Exotic aromas drift from your outdoor kitchen, where you and your spouse grill dinner. Later the two of you plan to stargaze in the hot tub.

Whether it's a private haven off the master bedroom, or an expansive outdoor room, your deck will quickly become a treasured retreat. It's where you'll entertain friends, enjoy family and unwind at the end of the day.

To build your dream deck, use Trex® decking, a composite material that offers great looks and is easy to care for—a rare combination. After all, you'd rather relax on your deck than toil over it.

### **My deck is rotting. Why is it better to replace it with a Trex deck?**

Trex decking is a durable composite product made of recycled plastic and wood that's guaranteed not to rot, crack or splinter. Start from scratch with Trex decking, and you can be sure your deck will last for years to come.

### **Wooden decks all seem so similar in color—unless they're repeatedly stained. What about Trex decking?**

Trex decking comes in six distinctive colors and three unique finishes. (See *page 32* for the Trex Color Palette.) You'll never have to stain a deck or railing made of Trex materials.

### **I love the sassy curves and bold style of my neighbor's Trex deck. I'd like a new deck too. Is it expensive?**

Patterns liven up any deck. (See *page 27* for ideas.) Trex decking is typically comparable in price to better grades of redwood and cedar. But you'll be money ahead with Trex, because you won't have wood's upkeep costs: staining or repairing.

### **Is it true that Disney World and the Presidential Trail at Mount Rushmore use Trex decking?**

Absolutely. Public parks, playgrounds, boardwalks and attractions around the country choose Trex for its durability, looks and environment-friendly qualities.

### **How do I get started planning my Trex deck?**

Start by thinking about how you'll use your deck. You'll also want to consider the physical characteristics of your yard and how your deck will fit in with the style of your home. To get started on the planning process, use the handy, tear-out Trex Planning Guide on *page 33*.

### **Can I build a Trex deck myself, or do I need a professional?**

While Trex decking is as easy to install as wood, there are various installation guidelines and zoning requirements you'll need to consider to ensure your deck is built properly. A professional deck builder can help with these and other issues, as well as provide design assistance. Finding a qualified builder is as easy as locating a TrexPro®. (See *page 31* to find out more about TrexPro contractors or builders.) ■

### **How do I contact a TrexPro® builder?**

**Simple, just call 1-800-BUY-TREX or go to [www.trex.com](http://www.trex.com).**

*Left: Trex decking and railing components are the perfect companions for a stunning oceanside vista.*



From a refreshing dip in the pool to an alfresco dinner with friends, the joys of the outdoors are just steps away when you build a stunning new Trex® deck.

# totaldeckliving



Homes are our havens in this hectic world, and there's no better place to relax and enjoy family and friends than out on the deck. Adding a Trex deck not only extends your living space, it gives your house a vital outdoor connection, one that's low maintenance and worry-free. With its unique composition of wood and plastic, Trex decking withstands both sun and water in style. It's ideal for all the varied activities you'll want to pursue outside—entertaining, casual dining, swimming, sunbathing, lounging and more.

As you visualize your dream deck, the possibilities are limitless. Early in your planning, you should think about the activities you'll want to pursue on your deck. Then picture the way you'll arrange your

deck to meet those needs. Just as your home is divided into rooms, your outdoor space should be divided into distinct areas too. Indoors, for example, you have separate rooms for cooking and relaxing. Your outdoor rooms can be set up much the same. Good planning will help you make the most of your outdoor space.

Your activities and the particulars of your property's layout are key components of your deck design. Let a TrexPro® help you maximize both for your entry into the fabulous world of outdoor living.

## Simply Entertaining

When you invite friends over to spend time on the deck, the fresh air and setting will make the gathering all the more relaxing. The part of your deck devoted to entertaining should have room for an arrangement of comfortable chairs and side tables, plus space nearby for a table that seats at least four to six people.

For a deck that James McDowell of Accent Deck Design in Austin built on a Texas property, a bumpout alongside the pool created an ideal spot for alfresco entertaining (*opposite*). A rectangular table is sur-

*Above, left:* Think about hours of direct sunlight and shade when choosing areas for deck activities.

*Opposite:* This bumpout is located to take advantage of dappled shade for entertaining.









### **Trex Pro® Tips: Multilevel Decks**

Adding levels to a deck is a great way to define spaces for various functions. Just three steps can create a separate zone that feels like you've entered a whole new outdoor space. For this Texas deck, builder James McDowell defined the levels by changing the direction of the Trex® decking. Other ways to define level changes include decorative railings made of Trex railing components, built-in planter boxes installed on the top or bottom step of a two- or three-step level change, alternating colors of Trex decking on adjacent levels or a decorative pattern on one level.



rounded by armchairs, side chairs and a loveseat, a stylish combination that offers both comfort and flexibility because you can move pieces around to suit different gatherings.

Make sure you allow space for easy traffic flow around the table. If you have the room, consider adding an outdoor fireplace. It will extend the time you can use your deck, both in terms of hours in the day and months of the year. With a loveseat and chairs clustered near the fireplace, you can continue the conversation under the stars.

### Casual and Carefree Dining

Whether it's an invigorating breakfast with your spouse, a relaxing lunch on your own or a lively dinner with the whole family, meals are much more enjoyable on the deck. The key to an area for casual dining is to make it close to the kitchen so you're not shuttling back and forth more than necessary. Choose a table in a size and shape that most efficiently seats your family and place it on the deck with room all around for easy maneuvering. A spot under a canopy of oak and cedar trees (*opposite*) makes a compelling area for casual dining on this attractive deck, where the trees can give a welcome bit of shade. Other ways to give your casual dining area a little shade or protection include placing it under an awning or pergola (lattice-like timber roof).

### Great Grilling

One of the most savory ways to prepare food is by grilling. A grilling station can be as simple as a rolling grill that you move into position as needed, or as elaborate as a professional-caliber gas grill built

*Below:* Greet the day in this casual corner overlooking the pool. Besides adding shade, trees can provide some shelter from wind.



### Design Insight: Built-Ins

Built-in benches, tables and planters add both function and beauty to your deck. And, because Trex® materials are so easy to work with and so weather-resistant, the possibilities

for built-in items are endless. Build a bench along a stretch of deck where the view is particularly inviting, and you'll always have a place to pause for quiet contemplation. A built-in

table, made in the same color as your decking, will create a unified look. Built-in planters filled with bright blooms add beautiful color to stair landings or corners of a deck.

*Right:* Grab a cool drink and your favorite magazine before stretching out at pool's edge to catch some rays. *Opposite:* These Texas homeowners placed their sunbathing area at the deep end of the pool, making it easy to dive right in for a quick swim.

right into a brick or stucco counter. When choosing an area of the deck for your grill, pick a spot that is sheltered from the wind so smoke doesn't blow in the cook's or guests' eyes. And make sure you have a surface near the grill for placing food and utensils.

### Catching the Rays

You'll want your sunbathing deck to get sunlight in the early morning or late afternoon, the safest hours to catch those rays. When you're ready to soak up some sun, you'll appreciate the convenience of a dedicated area, where all you need to do is plop down in a chaise lounge or stretch out on a towel—no time wasted in set up.

On this expansive deck (*above and opposite*), the sunbathing area is located at the deep end of the pool, so you can dive right in for a refreshing break. Chaise lounges stand ready, and a table is close by so that frosty drinks are in easy reach. If you don't have a pool, you can create a water oasis by placing stone urns nearby and filling them with fresh water that you can cup in your hands for a refreshing splash. Or install a fountain in the center of a sunbathing deck. The mist will keep sunbathers cool.



age from splashing,” says McDowell, who installed Winchester Grey Trex boards flush with the pool's stone edge. The 16x40-foot pool and its wraparound deck are located at the lowest level of a multilevel deck and are accessed by three wide steps made of slip-resistant Trex decking.

### Lots of Room to Play

Once you know all the activities you'd like to pursue on your deck, start thinking in terms of zones and square footage. You need a deck that is at least 300 square feet before you can begin zoning or assigning different areas of the deck to specific activities. A

“It's a worry-free surface for a pool—no splinters,  
no damage from splashing.” *James McDowell, builder*

### Splish-Splashing the Day Away

Whether it's Mom taking a quick dip for refreshment or the kids spending hours playing in the shallow end, a pool delivers fun for the whole family. With splashing and bare feet a given, you'll love Trex® decking as a pool surround: Trex decking is impervious to water and is slip-resistant.

Builder James McDowell, who created this 500-square-foot deck surrounding a pool, always recommends Trex decking to his clients with pools. “It's a worry-free surface for a pool—no splinters, no dam-

300-square-foot deck, for example, could be zoned into two areas—one 10x20 feet, the other 10x10 feet. The larger area could be devoted to dining and lounging, accommodating a table and chairs to seat six, plus a conversation area with a pair of chairs clustered around a side table. The smaller area could be a grilling station or a sunbathing deck. Builders across the country report that an average size for a deck is 300 to 400 square feet, with some decks much bigger.

Of course, the bigger the deck, the more zones and activities you can add, and the more you'll enjoy the total deck life. ■

To find sources for deck furnishings featured in this article, go to [www.trex.com](http://www.trex.com).







Outdoor cooking sizzles  
when you turn up the heat  
for casual deck dining.

# alfresco





# kitchens



Entertaining on your deck can include start-to-finish cooking and dining when you make an outdoor kitchen part of your Trex® living space. With the good looks and durability of Trex decking, there's no better surface to complement an outdoor kitchen—one of the hottest trends in home design today.

## At Your Fingertips

No wonder outdoor kitchens are so popular. You can host a dinner party or prepare a family meal entirely outdoors instead of shuttling from deck to indoor kitchen. When planning your own outdoor cooking area, be sure to include these main elements:

- Countertop space for prep work.
- Refrigerator for food and beverages.
- Grill for cooking.
- Sink for cleanup.
- Storage area for dishes and glassware.

Make sure you don't isolate the area—or the cook. Arrange a dining table and chairs nearby, as well as a few chairs near the countertop, so guests can chat with whoever is doing the dinner prep work and cooking. Because the grill will be built into a countertop, think about prevailing winds and position the grill so that smoke typically will blow away from where the cook and guests will be.

*Left:* From the kitchen sink to the fireplace, a Trex deck that features an outdoor kitchen/family room has all the conveniences of home.



*Left:* A tile-topped stucco counter adds style. *Opposite:* Built-in Trex® benches topped with plenty of pillows also double as storage units.

### More than a Kitchen

For the deck that builder Keith Neumann of KN Construction in San Jose, California, created, the homeowners wanted an outdoor kitchen and family room. Along one end of the Trex® deck, a tile-topped stucco counter contains a built-in deluxe grill, fully plumbed sink and an under-counter refrigerator (*above*). A stucco fireplace anchors the family-room end of the deck. For added appeal, Neumann fashioned an “area rug” in front of the fireplace by inlaying a rectangle of Madeira amid the Winchester Grey decking (*opposite*).

### Weatherproof It

You'll want your cooking center to be as durable as your Trex deck. Some materials to consider:

- Countertop base: Concrete, stucco or brick.
- Countertop: Bluestone, cast concrete, tile or soapstone.
- Sink: Stainless steel, copper or soapstone.
- Faucet: Unlacquered brass (develops an attractive patina that won't require polishing).

### Decorative Dining

Your outdoor kitchen space may be hardworking, but it can be pretty too. Pick up patterns and colors from other deck areas (and adjacent indoor rooms). Accent with candles, pottery, flowers and greenery. Choose tableware, for example, that echoes the color in your garden.

With an outdoor kitchen, you'll be able to spend even more time out on your deck, enjoying the delights of fresh-air living. And you won't miss a minute of the fun when entertaining. From first course to dessert, you'll be right there on the deck. ■

To find sources for deck furnishings featured in this article, go to [www.trex.com](http://www.trex.com).

### The Ultimate Outdoor Kitchen

In addition to the basic equipment that makes up an outdoor kitchen—grill, sink, refrigerator—there are other elements that can make it a truly deluxe cooking area.

- **Dishwasher:** Dishes won't have to be carried indoors and out.
- **Cooktop:** A cooktop burner installed in the countertop allows you to make pasta or sauces right outdoors.

- **Coffeemaker:** With an electrical outlet installed in the countertop and a coffeemaker in an under-counter cabinet, breakfast or after-dinner coffee is right at hand.
- **Outdoor fireplace:** Extend your deck time in the evening and take the chill out of the air in cooler seasons. Gather by the fireplace for after-dinner conversation.









# atwater's edge

Put Trex® decking right in the splash zone and enjoy a pool area that's smooth, safe and ever so stylish.



Adding barefoot across a sun-warmed deck, you stop at the edge of a sparkling pool and plunge into the cool water for a refreshing dip. Then it's up out of the pool and onto the deck, where you bask in the delicious feeling of total relaxation. A backyard pool is one of life's most delightful indulgences. Surrounding a pool with Trex decking makes the pleasure all the greater: You'll never have to worry about splinters, rotting boards or slipping. And because you don't need to stain Trex decking, you'll have that much more time to spend poolside.

*Above:* When planning your poolside deck, allow plenty of room in your dining and lounging areas so you and your guests can enjoy the pool and the view.  
*Opposite:* Because Trex decking is pliable, it will complement the curves around your pool.



### Easy on the Eyes

For years, pool areas tended to be uninspiring stretches of concrete that were rough on feet but popular for their durability. With Trex decking's ability to withstand water and sunlight, pool decks have gotten a whole lot prettier—and kinder to bare feet.

For a pool on a five-acre California property (*opposite*), builder David Nichols of David Nichols Custom Builder in San Diego created an idyllic setting. He used Trex decking to outline the broad-angled pool, installing the boards in a slight herringbone at each pool corner. Nichols took advantage of Trex decking being weather resistant and placed the decking right up to the pool's edge for a clean, classic look.

The spacious deck includes room for casual dining, as well as lounging in fashionable steamer chairs. The stairway leading from the pool to a lower area of the property is made of Trex decking, as is the railing top cap, giving a unified look to the outdoor space.

### Poolside Pleasure

When planning a pool deck, consider both safety and aesthetics. Trex decking meets both requirements! You'll have a surface that is slip-resistant and free from splinters, a real plus when children use the pool. The Trex Origins™ surface is so smooth, you can simply stretch out on a towel and sunbathe in

### Hot Tub Heaven

On a cool evening, you step out of the house onto a smooth Trex® deck. Just footsteps away, a relaxing hot tub waits, bubbling with steamy water. You slip in. Soon every muscle in your body melts. Ahhh. Bliss.

Indulge in a water fantasy by installing a hot tub surrounded by Trex decking. A typical four- to six-person hot tub measures 7x7 feet, so it's easy to include this popular item (with a built-in heater and therapy jets) in your Trex living space.

The deck design can be as simple as a narrow stretch of deck surrounding the tub and a built-in bench for keeping towels and robes handy. Or pamper yourself with a more elaborate lounging area. Include a built-in massage table for a complete body treat. Situate the

hot tub so it's secluded, yet convenient for guests. Or place the tub near your pool so you can move easily from one spot to the other.

All the features that make a Trex deck perfect for a pool apply to hot tubs as well. You won't have to worry about water damage, splinters or slipping. After all, the whole point of a hot tub is carefree relaxation.



perfect comfort.

You'll also want a deck that keeps its good looks. Harsh sunlight and splashes of pool water won't degrade a Trex deck. After 8 to 12 weeks, your deck will have weathered to its permanent hue.

A pool deck should include shaded areas so you can choose your time in the sun. Use Trex lumber in the same color as the deck on a small pavilion that blends with the surroundings.

### Classy Curves

Trex decking lets you enhance the many curves and angles that define a pool. If your pool has rounded ends, you might echo the shape with curved steps leading up to a raised deck area for dining or lounging.

For a pool that also offers a great view (*opposite*), design a wide-enough deck so you have flexibility in how you place dining tables or lounge chairs, making it easy to rearrange them on a whim—toward the sun, the pool or the vista.

Whether your poolside personality is energetic—in and out of the pool for exercise—or low-key—lounging for hours in cushioned comfort—you'll appreciate the smooth, stylish surface every time you touch bare toe to a Trex deck. ■



To find sources for deck furnishings featured in this article, go to [www.trex.com](http://www.trex.com).



# panoramicpleas

There's no better way to enjoy a stunning vista than from your own fabulous deck, built and designed to maximize the view.

## **Trex Pro® Tips: Add-Ons**

As you picture yourself savoring the view, think about the special items you'll want to include in your Trex® living space, such as built-in benches and tables or even a hot tub. For a Rocky Mountain deck (*opposite: above, right*), an outdoor fireplace was installed so the homeowners could enjoy dazzling sunsets while the fire took the chill out of the evening mountain air.



# ures



*Left: The Trex® railing in natural tones blends right into the landscape. Above, left: Water views greet you from all angles. Above, right: Built-in benches let you enjoy the mountain vista.*

When you're lucky enough to have an inspiring panorama right outside your door, a carefully planned deck lets you capitalize on the backdrop, whether mountains, parkland, woods, ocean or lake. If you've got it, flaunt it, the saying goes, and it's absolutely true when it comes to a great view. Here, a few things to consider:

### Wide-Open Space

As much as possible, you'll want the view to be unimpeded, so consider a simple railing and a wide-open deck that lets the vista play the starring role. On this deck (*left*) the floor and railing practically melt into the landscape. The decking is laid in parallel lines with a subtle inlaid curve marking the way to another section of the deck. And the railing consists of simple, but elegant vertical balusters without any design element that might block the view. The variety of Trex railing components lets you complement your deck and reflects your sense of style.

### Sunrise to Sunset

Think about the setting in terms of what time of day it will be most enjoyed. For example, if the view is to the west, you'll want to make sure the deck has areas for dining at sunset, as well as simply lounging to take in the beautiful sky. If it's a sunrise view, add a cozy niche with a small table and comfortable chairs—enough room to rest the coffee cup as you greet the day in splendid style. Water views are stunning all times of the day (*above, left*). Build a deck with areas for different activities so the sea can always be in the picture.

### Right Angle

Because it's important to position your deck so it will afford views from as wide an angle as possible, discuss options with your TrexPro® contractor right from the start, particularly if the terrain is challenging. So these Colorado homeowners can experience the wonder of nature, this deck (*above, right*) is located about 75 feet from the house and set amid the splendor of the Rocky Mountains. Builder David Sasaki of DS Deckworks in Bailey, Colorado, hand carried every piece of Trex lumber several hundred feet down a hill, then built the deck right into bedrock. ■







### **Trex Pro® Tips: One Material**

While the decking in this garden features lighter accents, you might consider putting the focus on your garden by using the same color of Trex® decking for all the elements—deck, railing, benches and pergola. Using one material creates a uniform look and turns the deck into a neutral backdrop to the gorgeous plants, trees and flowers.

A built-in bench can be a simple flat unit made entirely of 2x4s and 2x6s, or it can be a gracious retreat created of curved Trex boards.



# flowerpower

Enhance a garden setting with decks, steps and walkways made of Trex® materials.

Whether you tend a small herb garden just outside the kitchen door or a lush garden that meanders through your property, you know the allure of working with the soil. It's a back-to-nature connection that's good for the soul.

When creating a deck near your garden, think about garden-centered activities, including viewing, working and strolling. Choose durable, weather-resistant Trex materials for your deck so you'll have plenty of time to stop and smell the roses.

## Glorious Garden Views

To provide a place to view your garden at any time of day, build your Trex deck adjacent to your favorite rooms. On a deck just outside the kitchen, place a table and chairs so you can enjoy your morning coffee while taking in the beauty of the garden. Add a deck off your master bedroom, and you can catch a last look before climbing into bed.

For this San Diego garden deck, the homeowners extended their living space with a spacious balcony that lets them take in the splendor of their hillside garden (*page 18*). The L-shaped deck wraps around their primary living spaces.



*Above:* Structural elements such as arches or arbors can help define the various areas of a multilevel deck or garden path.



## Garden Party

What better place to have a party than on a Trex® deck overlooking your garden? Festive-colored fragrant blooms are the perfect backdrop for any celebration. Choose plates and napkins to match your favorite flower. You can even decorate serving platters or a cake with fresh blooms from your garden (as long as you haven't sprayed them with pesticides). For a small gathering, pick an intimate, shady spot along your garden path.



Because their home is built on a hillside, they literally extended their living space right into the air! Avid gardeners appreciate an expansive aerie that overlooks their lush landscape and leads to it as well, down a stairway off the deck (*page 17*).

When building a deck with a view of a garden, keep the railing simple so your view is not interrupted. Or bring a little bit of the garden to the railing by adding planter boxes. If your deck and garden are all on one level, with no sloping terrain, consider leaving an area of the deck without a railing so the deck blends seamlessly with the garden surroundings.

## Perfect Pathways

To lead the way through your garden with a smooth surface underfoot, create pathways made of Trex decking. Because it won't rot, Trex is perfect as both the walkway surface and the edging. Walkways can be as narrow or wide as your property and preference allow. And because Trex boards are easily bent, you can create curved walkways to enhance the naturalistic setting. A stairway made of Trex decking provides a pathway that is slip-resistant even in rainy weather.

Create a series of mini-decks or platforms throughout your garden. Use them as staging areas when you work in the garden—weeding, planting, etc. Or place a bench or chair on the mini-deck and indulge in quiet contemplation amid the blooms.



## Design Insight: Curved Edging and Landscape Timbers

In addition to building an entire garden deck, you can use Trex materials as edging for your garden's flower beds, a way to capitalize on their weather- and insect-resistant qualities. Because of its extreme flexibility, Trex Landscape Edging (available in Winchester Grey) is especially ideal

for curved edgings that will follow whatever natural bends your flower beds may take.

And Trex Landscape Timbers are ideal for raised flower or veggie beds. These water- and decay-resistant boards contain no harmful chemicals, which make them a logical choice.





### Water World

There's nothing like the sound of trickling water to relax you, so it's no wonder fountains are highly desired by homeowners. To add an exotic touch to your living space, build a Trex® deck near a waterfall or even surround a garden fountain with Trex decking. Unlike wood, Trex boards are water-resistant, so the soothing spray won't damage them. One way you can make a fountain a focal point in your garden is to

### Green Thumb Haven

If you like to cut and arrange flowers or do a lot of potting, turn a section of deck near the house into a potting area. Allow enough room for a small bench or worktable to hold garden tools, pots and bags of soil. To further define your potting area and to provide shade while you work, build a trellis over this section of your deck.





*Left: A recirculating pump in a wooden half barrel sits amid the flowers for a simple, eye-pleasing fountain.*

create a deck with a sunburst pattern (see *page 27*), then put the fountain in the center of the burst with the Trex® boards radiating out from it.

Some waterfalls merge into their surroundings so perfectly that visitors aren't sure whether to applaud you or Mother Nature. These San Diego homeowners turned what could have been a problem slope into a prized focal point at the end of their pathway (*page 16*). After securing a series of stone slabs into the hillside, they randomly added rocks and pebbles. A recirculating pump keeps water tumbling down.

For an entirely different, but equally appealing, fountain, place an old-fashioned looking pump in a wooden half barrel or stone basin next to your garden path. Voilà! Instant oasis (*above*).

## Gardens to Feed Your Passion

Use Trex lumber to create decks or beautifully curved benches that nestle amid gardens created for particular passions, such as butterflies, antique roses or bird-watching. A butterfly garden can be as simple as a few butterfly bushes surrounded by perennials and a stone urn filled with water for the butterflies to drink. Place a deck and bench nearby and admire the fluttering beauties as they come and go.

Devote a section of your property to antique roses, which can be ordered from specialty nurseries. Build trellises for the roses to climb, as well as a deck with plenty of seating areas or even a porch swing, so you can relax for a spell while breathing in the heady fragrance. If you have bird-watchers in the family, position a deck near a wooded area of your yard and furnish the deck with a table and chairs. Devout bird-watchers won't budge for hours if there are interesting birds nearby, so make sure the chairs are comfortable and there is plenty of room on the deck to set up a spotting scope on a tripod.

## Bridges, Pergolas and More

If there is a pond or stream through your garden, build a bridge over it using Trex decking and railing. It won't be affected by the moist surroundings, and you'll love the chance to pause on the bridge and enjoy the setting. Or create a garden room by building a pergola (lattice-like timber roof) with a deck and bench just underneath, made of Trex materials. It can be a private haven or a favorite family gathering spot. Gazebos also add a touch of whimsy to any garden. (Turn to *page 24* for more about these backyard structures.)

As you plan your own garden path, include enough space for all the flowers and plants you love. Choose Trex decking, and you'll enjoy a carefree stroll from your deck to your favorite outdoor places. ■

To find sources for deck furnishings featured in this article, go to [www.trex.com](http://www.trex.com).

# insideout



Want a bigger kitchen?  
Wish you could bring  
the outdoors to your bedroom?  
Expand your rooms with Trex® decks.

You throw open the set of French doors and step from your dining room out onto your Trex deck complete with the trappings for an elegant dinner. A built-in buffet table just outside the doors holds the makings of the first course: fresh green salad, crusty bread, wine spritzers. The dining room's hardwood floors blend almost seamlessly into the Trex Saddle-color boards of your deck. Near the railing stands a table for two, lit by the glow of candles. Your dining room suddenly is the expansive space you've dreamed about for years.

Just the act of crossing the threshold from indoors to out has a relaxing effect. That's the allure of outdoor living. It makes entertaining more casual, quiet moments more soul satisfying. Many homeowners yearn for that indoor-outdoor connection and are building decks that are much more than platforms for grilling and sunbathing. Today's decks are outdoor rooms complete with architectural details, seating arrangements and color schemes that extend the character of indoor spaces. It's easy to create a Trex deck with the feeling of an outdoor room.

## Trex Pro® Tips: Stairways

Stairways are focal points inside a house, and they can be just as attractive outside when made with Trex decking and railing components. For a simple stairway connecting two levels of a deck, add decorative caps to the railing posts to mark the top of the stairs, and more decorative caps at the bottom. A stairway with at least one or two turns creates the opportunity for landings.

If there is a pretty view from a landing, enlarge the landing so it becomes a destination all its own. A rounded landing with a curved, built-in bench makes a stunning small deck. At the ground level of a stairway, create a decorative skirt using Trex boards curved into patterns or installed vertically to mimic the look of traditional beadboard paneling.

*Above: Look inside your home for ways to accent your outdoor rooms. Select furnishings and colors for your Trex deck that echo your indoor style.*



*Right:* Make an indoor-outdoor connection with a Trex® deck just off the master bedroom. *Opposite:* Expand your kitchen with a table and chairs placed outside your door. *Below:* Columns can mark transitions between areas of your deck.



### Trading Spaces

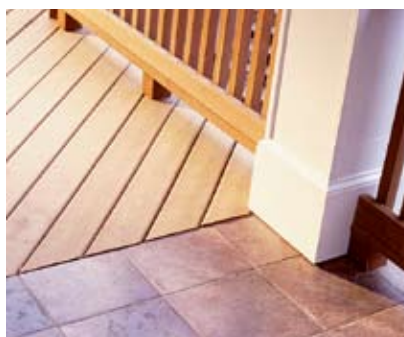
Build a private deck off a master bedroom and furnish it with an arrangement straight from the living room—two comfortable chairs clustered near a side table (*above, right*). Use all-weather wicker chairs and choose cushion fabrics that match or complement the fabrics in your bedroom to visually tie the two spaces together.

For a deck just outside a living room, build banquettes and line them with cushions, picking up the fabric color or pattern. You'll feel like you're walking into an airy extension of the living room.

As with any gathering space indoors, make sure you have strategically placed landing zones for guests to place drinks without having to look around for a spot. Small tables or extra-wide armrests built in at intervals along a bench will do the trick.

### Go with the Flow

Place a table and chairs on a deck just outside the kitchen (*opposite*), and you'll create a natural traffic pattern from indoors to out when you entertain, as well as for casual family meals. This simple flow makes the deck a logical



extension of the kitchen. Guests and family will feel free to move easily between your indoor and outdoor rooms.

### Top It Off

Even if the majority of your deck is open-air, build a roof over one section (*page 21*) to create an area that's always shaded and also to give the space a roomlike feeling. Even a portico (a small roof over a doorway) or pergola (lattice-like timber roof) over a set of French doors is enough to create the feeling of cover overhead, so essential to the sense that you are in a room.

### Details Make a Difference

Use columns or square posts to mark the transitions from one part of a deck to another (*left*). Columns will create the same feeling that a doorway does inside, signaling a change from room to room. Another architectural detail that can make an indoor-outdoor connection is a baluster (a vertical support for a rail). Repeat the design of a baluster found indoors on a deck railing. ■

To find sources for deck furnishings featured in this article, go to [www.trex.com](http://www.trex.com).

### Design Insight: Matching the Floor Colors

Make your deck seem to extend right inside the house, and vice-versa, by choosing a color for your Trex decking that is similar to—or complements—the hue of the flooring just indoors. For example, if your deck is adjacent to a family room with medium-tone hardwood floors, choose Trex boards in Saddle, and the deck will blend right in. Likewise, a Winchester Grey deck will merge into a dining room with driftwood gray wall-to-wall carpeting. Hardwood floors stained dark brown, a popular look in interior design today, will blend well with a Woodland Brown Trex deck.





# gazebo retreats

Re-create the charm of yesteryear in a modern-day setting when you include a gazebo in your Trex® living space.



Once known as summerhouses, gazebos are cozy retreats in any season. With their open sides, peaked roofs and whimsical shapes, they offer an enchanting space that's both out in the fresh air and protected from harsh elements. What better way to enjoy the beauty of nature?

Typically round or octagonal in shape, gazebos flourished during the Victorian era, often gracing the lawns of big estates or anchoring town squares. Today, gazebos have become popular backyard havens, creating playful settings for everything from afternoon picnics to romantic interludes.

## Lasting Looks

Trex decking is ideal for a gazebo. Use it for the roof, floors and railing, and your charming summerhouse will keep its good looks, thanks to the weather-resistant qualities of Trex materials.

To give a Texas home a shaded hideaway (left), builder Chuck Shope of Shopes Construction in Houston built an 18x10-foot gazebo with a distinc-

## Entertaining in the Gazebo

Although a gazebo makes a cozy private retreat, it's also a wonderful spot for entertaining and special occasions:

- Host an intimate dinner party by candlelight.
- Set up a buffet for a graduation party.
- Dress it up for a romantic spring wedding.
- Serenade your sweetheart under the stars.

And, with the shade it offers, the gazebo is ideal for children's play dates. Stock up with drawing paper and crayons, and let the setting inspire a masterpiece.

*Left:* The sweeping curve of the stairs leads you right to the gazebo. Trex boards in a deeper hue accent the curves.

tive hipped roof, topped by a vented roof cap. A breeze can flow through the slatted rails just under the cap. This allows more fresh air to circulate through the open-sided gazebo, a welcome feature for warm southern weather.

Shope used Saddle-color Trex® lumber for the gazebo's roof. Because mixing colors is a hot trend, he combined Saddle and Madeira for the railing and floor. Installing the floor boards in an octagonal pattern (*right*) created an interesting design underfoot.

To create even more protection from the elements, screening can be added to a gazebo, something you might consider if you spend a lot of evenings outdoors. Trex lumber can be used as the framework that holds the screening in place. The vents just under the roof cap also could be screened if needed.

### Stay Awhile

Seating inside your gazebo can be as traditional or fanciful as you wish:

- If you're yearning for a serene spot to contemplate the view or chat with a friend, an old-fashioned porch swing or glider may be just the thing.
- Or line the perimeter of your gazebo with built-in benches—perfect for reading the morning paper or sharing a storybook with a child.
- An oversize hammock will catch the breeze, inviting you to linger for a siesta.
- How about a flea-market wicker chaise upholstered in a weather-resistant fabric? Choose bold geometrics for 21st-century punch or cabbage roses for a graceful Victorian escape.

Of course, if you envision late-afternoon teas or wine-and-cheese parties, you might prefer a table and chairs. Surround a gently worn table with mismatched chairs painted in soft colors for a cottage look. String twinkle lights around the railing to create a special glow. ■

To find sources for deck furnishings featured in this article, go to [www.trex.com](http://www.trex.com).



*Above:* Seating in your gazebo can be as simple and serene as a table for two. Invite a friend to join you for some conversation in the shade.

### Shaping Up

As you make plans for a gazebo, make sure you discuss the overall look with your TrexPro® builder or contractor. Some important points to remember:

- **Size:** The gazebo, along with the rest of your Trex living space, should be proportional to your yard and house.
- **Shape:** Gazebos can be a variety of shapes: round, octagonal, oblong or square. Choose your favorite

configuration, but you should also keep in mind how you'll fill the space. Hot tub? Built-in benches? Comfy chairs?

- **Siting:** Your gazebo will be a focal point, so think about how it's situated. Can you see the gazebo from the house? Also consider the view from your gazebo. Most gazebos have only one entry, so you'll want to be sure it is positioned the most convenient way.



Because Trex® boards are flexible, they can be molded to create this gracious deck pattern of serpentine curves. *Opposite, left:* Two different colors of Trex decking create a sunburst focal point. *Middle:* The same deck defines a seating area with a circle in a contrasting Trex color. Even the chair, bench and footstool are fashioned with Trex lumber. *Right:* Inlaid Trex boards create a striking graphic element.

### **Trex Pro®** Tips: Curve It

Creating curved boards is done right on the construction site: A Trex contractor will bring a special propane device, apply heat to the Trex boards, bend them to the desired curve and fasten in place.

Show off your curves: A built-in bench with a gentle curve encourages conversation. Extend the curved seating with flower beds, also built-in, and fill them with blooming plants.





# patternplay

Imagine well beyond the straight and narrow to a patterned deck floor that will make a style statement all its own.

Gone are the days when deck floors were laid strictly in parallel lines. With Trex® decking, the possibilities for varied floors are endless, whether a design is created using straight boards arranged at angles or the supple Trex decking is curved into delightfully whimsical patterns. Besides creating visual interest, a pattern also distinguishes one zone from another within a larger deck. Your TrexPro® contractor can help customize a fun design for your deck.

## Sunburst

Celebrate the wonder of your outdoor space with an exuberant sunburst pattern. An entire sunburst makes a stunning floor for a gazebo or other circular area. Place a round dining table in the center of the sunburst and let the other boards radiate out from it. Or create a quarter sunburst to point the way toward stairs or to make a transition from one section of a deck to another. The sunburst can be made using all one color of Trex decking material or alternating hues for added contrast (*above, left*).

## Herringbone

A centuries-old pattern familiar in everything from tweed jackets to sisal rugs, this angled design is quickly becoming the new classic for deck floors. Builders across the country report that the herringbone is one

of their most frequently requested patterns. It offers more interest than a straight or perpendicular pattern, yet is subtle enough to blend seamlessly with any style house, from contemporary to Colonial.

## Uniquely Curvy

Trex decking can be worked into sinuous curves for whatever form you fancy. To accentuate the grand sweep of a deck that wraps around a house, Trex boards were bent into a wonderful wavy pattern (*opposite*). The resulting floor suggests graceful movement, as if you could sashay rather than simply walk.

A whimsical center runway (*above, right*) was created by skillfully inlaying curved Trex boards within larger parallel and herringbone sections of deck.

Curved Trex boards also create shapely borders for hot tubs, pools and to set off areas such as for dining.

## Geometric

Create a circle, square, octagon or rectangle within the deck as an eye-pleasing way to define a zone, such as a seating area complete with modern outdoor fireplace (*above, middle*). Or take advantage of the color options with Trex decking and create a striped pattern for the entire deck floor. ■





# Stylin'

Play up the architecture of your house with a deck that echoes its charm.

**A**lthough a deck is all about enjoying the outdoors, you'll want to build yours in a way that makes it a seamless part of your house. As you picture your dream deck, think about the architectural style of your home. Then choose your favorite details and tuck them into your deck design for a signature look.

**Victorian-style** houses are known and loved for their fanciful features including turrets, bay windows, ornamental brackets and spindlework railings. When building a deck on a Victorian-style house, consider:

- Wraparound porch: Turn your deck into a wrap-

around porch (*above*), a feature found on many historic Victorian houses built in the late 1800s. Here, a Trex® deck and ornamental railing complement the front entry of a new Victorian-style house.

- Balcony: Add a second-story deck off a bedroom (*above*) and create a decorative railing to enclose it. Use a Trex railing design, such as the stylized "x," or work with your builder to create a custom railing design.
- Gazebo: Include a gazebo with your deck plans. These round or octagonal structures add a touch of Victorian romance and also provide shade.

**Colonial-style** houses include such straightforward designs as the saltbox, Cape Cod or the

## Elements of Style: Railings to Match

One way to ensure that your deck complements the architecture of your house is to repeat a design element in the deck railing. Stand in the yard in the area where the deck will be and search the facade of the house for architectural inspirations. Some possibilities: Old-house shutters often have a cutout, in the shape of a star or heart, for example, that could be incorporated in the railing design.

*Opposite:* These homeowners painted their Trex® railings white. Although Trex components never need to be painted, they do hold paint well.

*Right:* Trex railings can reflect your home's architectural style.

center-hall Colonial. A deck added to a typical Colonial-style house should be a fairly simple design and could include:

- **Trellis:** Add a trellis to your deck for a bit of architectural interest and to create a place for climbing vines or flowers.
- **Classic railing:** The simpler, the better, when designing a railing for the deck of a Colonial-style house. Keep the vertical railing posts straight with no curvy cutouts.
- **Caps:** Add architectural detail with the railing post cap by having your builder rout a custom design into it or choosing a cap with a peak.

**Contemporary-style** houses can be either flat-roofed or gabled, often have a number of glass walls and have unadorned exteriors made of wood, brick or stone. When adding a deck to a contemporary-style house, consider:

- **Angled corners:** A deck with sharp angles as part of its overall shape is in keeping with the bold outlines of many contemporary-style houses.



- **Multiple levels:** Build a deck with more than one level to suit a sloping terrain or to give both the first and second floors of the house an indoor/outdoor connection.
- **Floor design:** An unusual floor pattern can match the exuberance of a contemporary-style house. Try a wavy floor pattern created by bending Trex decking, a striped design made by alternating Trex colors or a geometric pattern made by inlaying Trex boards. ■

## Trex Designer Series Railing™ Unlimited Design Possibilities Without Endless Complications

Railings normally require more maintenance than any other portion of a deck. This is all the more reason to use low-maintenance Trex railing materials. The Trex Designer Series Railing™ line provides everything you'll need to build a stunning rail system, including balusters, decorative post caps and skirts, and stylish handrails. And it's just as easy to care for as your Trex deck.



Left: Shaped top rails and rail caps give you a finished look without cutting or routing.



# trex<sup>®</sup> specs

Decks so innovative,  
you're bound only by  
your imagination.

Trex, the #1 national brand in composite decking and railing, lets you create a deck unlike any other. Trex decking and railing has the widest range of design possibilities from the traditional to the exotic. No other composite decking material has as extensive an array of colors, shapes, sizes and finishes. No matter what your style, you'll be able to find the product that fits your outdoor decking and railing needs. Trex combines all of the low-maintenance benefits of composites with unparalleled beauty and design from the originator of composite decking. With over a million satisfied customers and 13 years experience manufacturing high quality decking and railing products, Trex Company has developed the proven track record that allows us to offer homeowners a 25-year limited residential warranty on Trex products.

Trex Company, the largest manufacturer of composite decking in the world with the largest trained contractor network in the industry, offers its products at over 4,500 retail locations in the U.S. and Canada.



Above: Turn sweeping curves and unexpected turns into a luxurious Trex living space.

## Footloose and Fancy Free

While your neighbors might spend a whole weekend repairing or restaining their deck, you've got better things you can do. All your Trex deck requires to maintain its good looks is periodic cleaning. With little effort, your Trex deck will remain beautiful for years to come.

## So Good It's Guaranteed

Trex decking performs like a champion in all kinds of climates. It's so durable, Trex offers a 25-year limited residential warranty against:

- Splintering, splitting, cracking.
- Rot and decay.
- Termite damage.

### TREX vs WOOD

|                                      | TREX | WOOD |
|--------------------------------------|------|------|
| More durable                         | X    |      |
| Pleasing to the touch/slip-resistant | X    |      |
| No staining or painting              | X    |      |
| No rotting, splintering or warping   | X    |      |
| No harmful chemicals                 | X    |      |
| Curvability                          | X    |      |

### TREX vs OTHER COMPOSITES

|   | TREX | OTHER COMPOSITES |
|---|------|------------------|
| Most preferred by pros  | X    |                  |
| Largest range of profiles   | X    |                  |
| Most natural look and feel  | X    |                  |
| Most extensive network of contractors                                 | X    |                  |
| Most composite decks built  | X    |                  |
| Easy to cut, route and fasten   | X    |                  |
| Most preferred colors and finishes                                    | X    |                  |
| 25 Year Limited Warranty <sup>†</sup> – backed by the industry leader | X    |                  |

## Contacting a TrexPro® Builder

It's a good idea to choose a builder early in the process. Trex® offers the largest nationwide network of highly qualified TrexPro contractors. They have all been instructed on proper construction techniques, and their work has been thoroughly inspected for quality. These are the men and women you can trust to do the job right. To find a TrexPro near you, call 1-800-BUY-TREX or visit [www.trex.com](http://www.trex.com).

Remember to inquire about local building codes that may affect your deck design and permits you'll need. And before you meet with your TrexPro, take time to fill out the Trex Planning Guide on *page 33*. Bring it along, and you'll be ahead of schedule right from the start.

### TrexPro® Tips: Did You Know?

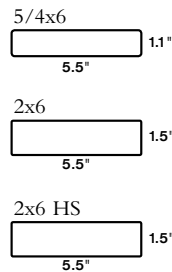
- If your building plans call for 24-inch spans, use 2x6HS. These are the most rigid boards that Trex dealers offer. They are stocked in two distinct finishes: Trex Accents® and Trex Brasilia®. Both finishes look great in waterfront settings.
- Trex decking **must** be gapped to allow for expansion/contraction due to temperature changes. This ensures water on your deck will drain well. Always follow Trex recommended gapping guidelines.

For more information about these boards and installation guidelines, contact Trex at **1-800-BUY-TREX** or go to **[www.trex.com](http://www.trex.com)**.

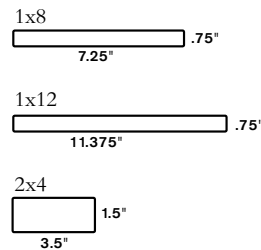
## All Shapes and Sizes

One of the advantages of building a Trex deck is that your builder has a complete line of Trex profiles to choose from when creating your living space. Trex comes in sizes perfect to accommodate your decking, railing, stairways, landscape edging, fencing and more. And Trex railing components allow you to create a custom railing for your deck.

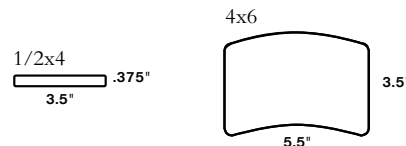
### Decking



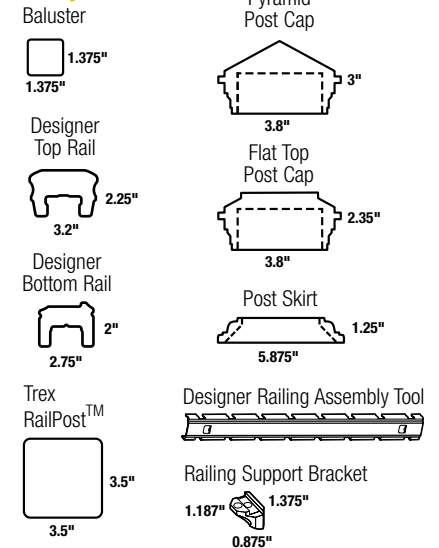
### Fascia, Risers and Trim



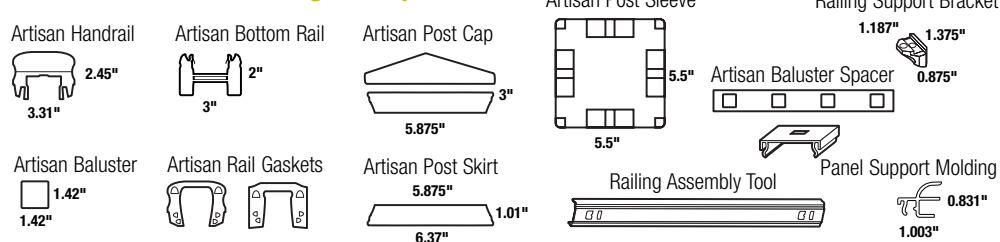
### Landscape Edging & Timbers



### Trex Designer Series Railing™ Components

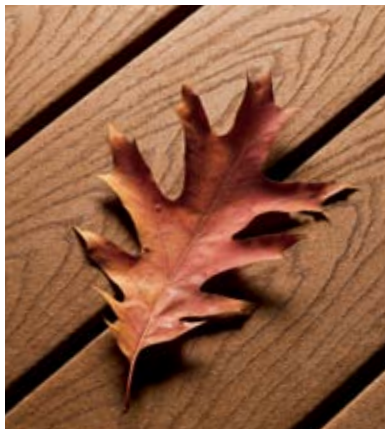


### Trex Artisan Series Railing™ Components



### Inspiration From Nature Enduring Enjoyment From Trex®

In creating the full line of Trex® decking and railing we took a cue from the great outdoors itself, with its wealth of colors and evocative textures. No matter what your style, you'll find a wider range of options than you ever thought possible. Trex lets you create spectacular curves. Create unique combinations of patterns with distinctive colors. Create a deck the way you envision it.



Trex Accents®



Trex Origins™



Trex Brasilia®



# crazyaboutcolor

## Trex Origins™ Color Palette

The original, smooth Trex surface, for deck designs with a clean, contemporary feel.

### unweathered

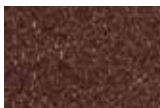


Saddle\*

### weathered†



Winchester Grey\*



Madeira



Woodland Brown



\*5/4 x 6 only available in Saddle and Winchester Grey.

## Trex Accents® Color Palette

A rich, warm, wood grain surface sets Trex Accents® apart from other decking materials. Perfect for decks matched to a traditional architectural style or designs created to mirror Nature in her most expressive moods.

### unweathered



Saddle

### weathered†



Winchester Grey



Madeira



Woodland Brown



Rich, distinctive hues add character to your Trex® deck.

With Trex decking, you'll never have to wonder what your deck will look like in years to come. Simply choose from the Trex Color Palette, which shows how each color looks after 8 to 12 weeks in the elements. No surprises! Pick a deep shade that accents your home's light-colored siding. Or find a color that blends right in. Choose deep browns, a stylish tan, madeira or soft grey—or mix and match!

## Bend It, Shape It, Curve It . . .

Trex decking materials can run circles around wood. Your builder or contractor can heat Trex decking so that it easily forms curves and rounded edges—for your deck floor, stairs and railings. Zigzags, geometric shapes, sunbursts, swooshes and other fun inlaid patterns add pizzazz to a deck floor. But don't stop at that. Throw a few more curves and angles around other items too. You'll love the look for:

- Pools
- Hot tubs
- Gazebos
- Fountains
- Built-in planters
- Garden paths

For more ideas on playful patterns you can create with Trex decking, see page 26 and 27.



## Trex Brasilia® Color Palette

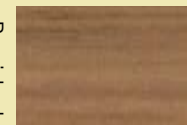
With new Trex Brasilia, you'll find everything you love about the distinctive, exotic look of tropical hardwoods without having to worry about the effects of time and climate. Enjoy the kind of subtle shadings and natural color variations that can only be found in Trex Brasilia.

### unweathered



Burnished Amber

### weathered†



Cayenne



† Allow approximately 8-12 weeks for weathering.

Actual colors may vary from photos and some variation may exist between boards.

# Trex® planning guide

## Imagine the Possibilities!

Use this handy, tear-out page to help you plan your dream deck. Answer as many questions as you can, then take it along when you meet with your TrexPro®. To find a TrexPro builder call 1-800-BUY-TREX or go to [www.trex.com](http://www.trex.com).

### Uses

- Check all the ways you plan to use your deck:
  - ☐ Lounging
  - ☐ Casual dining
  - ☐ Grilling
  - ☐ Entertaining
  - ☐ Sunbathing
  - ☐ Children's play area
- How many people will use the deck regularly?
  - ☐ 1-3
  - ☐ 4-6
  - ☐ 7 or more
- Will young children be using the deck?
  - ☐ Yes
  - ☐ No
  - If yes, what ages? \_\_\_\_\_
- How many people do you typically entertain?
  - ☐ Less than 4
  - ☐ 4-10
  - ☐ More than 10
- What existing or planned structures might you want to include in your Trex living space?
  - ☐ Swimming pool
  - ☐ Hot Tub
  - ☐ Gazebo
  - ☐ Other: List \_\_\_\_\_
- Do you want the color of the deck or deck railing to match the siding or trim of the house?
  - ☐ Yes
  - ☐ No
  - ☐ Maybe
- What is the approximate square footage of your house? \_\_\_\_\_
- What is the approximate size of your property? (1/4 acre, for example) \_\_\_\_\_

### Yard

- Will the deck provide a major access from house to yard?
  - ☐ Yes
  - ☐ No
- What areas of the yard will the deck lead to?
  - ☐ Garden
  - ☐ Play set
  - ☐ Lawn
  - ☐ Other: List \_\_\_\_\_
- What are the physical characteristics of the yard? (Check all that apply.)
  - ☐ Level
  - ☐ Hilly/sloping
  - ☐ Heavily wooded
  - ☐ Grass lawn
  - ☐ Other: List \_\_\_\_\_

### Home

- What is the style of your house?
  - ☐ Cape Cod
  - ☐ Colonial
  - ☐ Contemporary
  - ☐ Ranch
  - ☐ Other: List \_\_\_\_\_
- What is the color of your home's exterior siding? \_\_\_\_\_
- Of the house trim? \_\_\_\_\_
- What is the view from the area where you want the deck?
  - ☐ Lawn
  - ☐ Neighbors
  - ☐ Water (lake, river, pond, ocean)
  - ☐ Woods
  - ☐ Other: List \_\_\_\_\_
- What part of the day will the deck be in direct sunlight?
  - ☐ Morning
  - ☐ Afternoon
  - ☐ Into the evening

- What are the major sources of shade?
  - ☐ Trees
  - ☐ House

- Which direction does the wind usually come from? \_\_\_\_\_

- Rate the windiness of the area where your deck will be:
  - ☐ Just a few breezes
  - ☐ Moderately windy
  - ☐ Quite windy

### Style

- What overall shape are you envisioning for the deck?
  - ☐ Angled
  - ☐ Multilevel
  - ☐ Octagonal
  - ☐ Rounded
  - ☐ Not sure
- Do you want a Trex railing around your entire deck or only certain areas?
  - ☐ Entire outside of deck
  - ☐ Certain areas: List \_\_\_\_\_
- Do you have deck furniture or will you be buying new?
  - ☐ Existing
  - ☐ New
- What shape of table will you use?
  - ☐ Oblong
  - ☐ Round
  - ☐ Other: List \_\_\_\_\_
- How many chairs do you want for the eating area?
  - ☐ 1 or 2
  - ☐ 3-6
  - ☐ More than 6
- How many chairs for lounging? \_\_\_\_\_

- What Trex built-ins would you like?
  - ☐ Benches
  - ☐ Table
  - ☐ Chairs
  - ☐ Planters
  - ☐ Other: List \_\_\_\_\_

### Budget

- What price range do you have in mind for building your deck? \_\_\_\_\_





Find inspiration for your deck everywhere.  
Except other backyards.

*Imagine your perfect space. Trex can make it a reality with more preferred styles, colors and finishes – all backed by a 25-year warranty. And because Trex lasts longer and is easier to care for than wood, you can look forward to years of worry-free enjoyment. For help in designing the deck of your dreams, call 1-800-BUY-TREX, or start now at [trex.com/designcenter](http://trex.com/designcenter).*

**Trex®**  
Create Your Space.®